

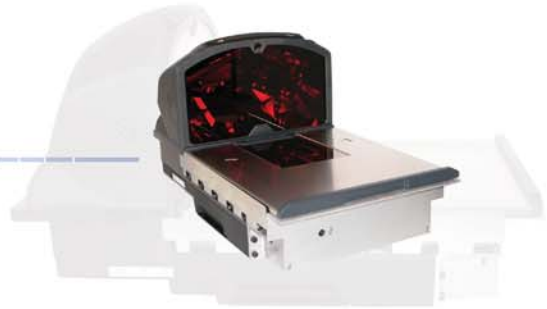
MS2xxx SERIES **Stratos®**

PRODUCT GUIDE

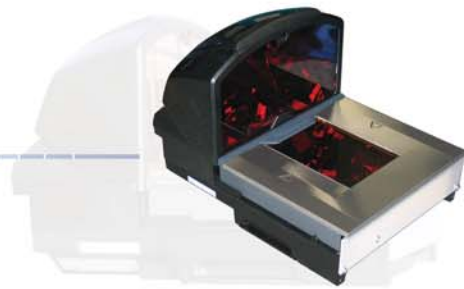
6-Sided, Bi-Optic,  
High-Speed, Hi-Volume,  
In-Counter Laser Bar Code Scanners

**STRATOS** SERIES

MS232x StratosH



MS2122 StratosE



MS202x Stratos





From its brilliant blue indicator to its smooth charcoal body and black accents, Stratos exudes quality and beauty. Its tasteful

above-counter design speaks of its high-performance upbringing. In fact, everything about Stratos is purposeful; designed to take high-volume POS scanning to new heights.

**Speed. Because you don't want your customers waiting in line.** Time is money. And nowhere is that more apparent than at the checkout. With Stratos**SCAN**™ 6-sided, 360° scanning, advanced Stratos**SPHERE**™ decoding software, 6000 scans per second, and a class-leading 68 scan lines, Stratos' performance is sure to get customers through fast. And thanks to Stratos**SCAN**, operators also benefit from minimized fatigue and stress associated with twisting and turning products.

**Uptime. Because you don't want your scanner waiting for a repair technician.** You only have a certain number of lanes per store. Each needs to be ready for action when it's convenient for your customers. That's why Stratos is constructed like a tank and tested to withstand the rigors

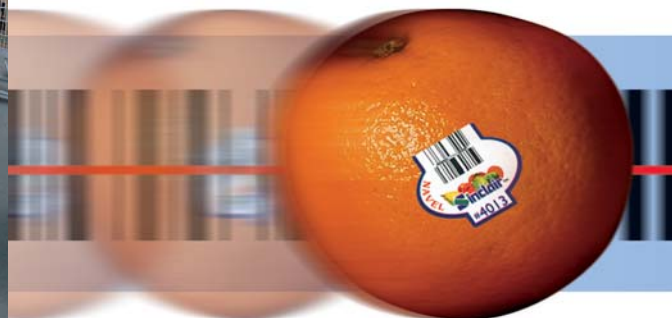
of today's checkout environment. But we've faced reality, scanners sometimes malfunction, so Metrologic invented Stratos**SWAP**™ modular optics engine technology – small, pre-aligned, field-replaceable modules that pop into place in a matter of minutes. Simple. No need for full-unit spares taking up warehouse space. No need for degreed engineers on-call. What's more, Stratos' vertical and horizontal scanning zones operate totally independently one from another – a feature we call Stratos**SYNC**™. If one goes down, the other keeps scanning to keep your customers moving.

**Return on investment. Because we don't want you waiting to realize increased profit.** It starts with value pricing. Then we add features like Stratos**SCHOOL**™ operator training software and a solid “bumper to bumper” warranty and, because every dollar counts, our light 16lb. (non-scale) unit even costs less to ship.

From the  
Counter Down  
(a scant 4 inches might we add)  
Stratos is  
Designed for  
Speed, Uptime  
and Return  
on Investment.

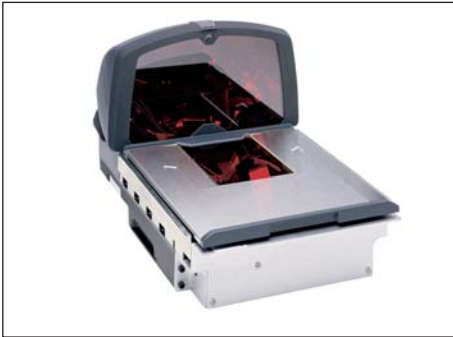
**So why are you waiting?** There's no better time to consider replacing your old flatbed scanners, upgrading your existing 4- and 5-sided dual-plane scanners or upgrading to a scanner/scale. Call us or click on the new products banner at [www.metrologic.com](http://www.metrologic.com).

Stratos**SCAN**™ Stratos**SWAP**™ Stratos**SCHOOL**™ Stratos**SCOPE**™ Stratos**SPHERE**™



## Stratos Product Selection Guide

Description			Sides Scanned	Length	Width	Tower Width	Tower Height
<b>Stratos</b>							
MS2020	Scanner/Scale	Full Length	6	508mm (20.0")	292mm (11.5")	324mm (12.8")	178mm (7.0")
MS2021	Scanner	Full Length	6	508mm (20.0")	292mm (11.5")	324mm (12.8")	178mm (7.0")
MS2022	Scanner	Compact	6	419mm (16.5")	292mm (11.5")	324mm (12.8")	178mm (7.0")
<b>StratosE</b>							
MS2122	Scanner	Sub-compact	6	398mm (15.7")	292mm (11.5")	292mm (11.5")	178mm (7.0")
<b>StratosH</b>							
MS2320	Scanner/Scale	Full Length	6	508mm (20.0")	292mm (11.5")	292mm (11.5")	178mm (7.0")
MS2321	Scanner	Full Length	6	508mm (20.0")	292mm (11.5")	292mm (11.5")	178mm (7.0")
MS2322	Scanner	Compact	6	419mm (16.5")	292mm (11.5")	292mm (11.5")	178mm (7.0")



**Stratos** is a high performance in-counter bi-optic scanner/scale designed for the most demanding high volume supermarket and point of sale applications.

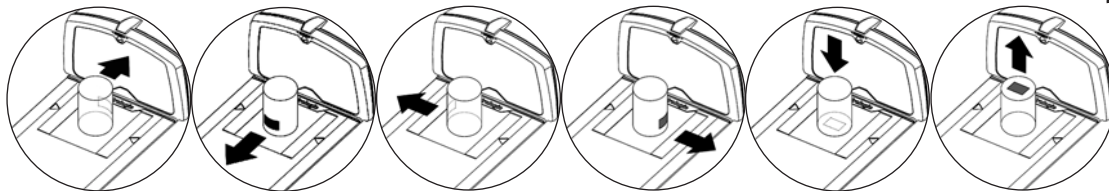


**StratosE** is a high performance in-counter bi-optic scanner designed for supermarket and POS applications having narrow enclosures around the vertical tower.



**StratosH** is a high performance in-counter bi-optic scanner/scale designed for supermarket and POS applications having narrow enclosures around the vertical tower.

### Bar Codes Can Face All 6-Sides, 360° for Maximum Performance and Speed



# Features Set Stratos Apart

**Bright Blue and White LEDs**  
Easy to see scan and good read indicators.

**Multi-function Push Buttons**  
Operator-side volume, sleep and scale zero controls.

**Field Replaceable Vertical Window**  
Quickly remove vertical window for cleaning or replacement.

**Debris Guard**  
Eliminates debris from interfering with scale operation.

**Stainless Steel Platter**  
Easily removed for cleaning, debris removal or replacement.

**Scratch Resistant Window**  
Equipped with Diamonex® or Sapphire horizontal window.

**High Impact Window Frame**  
Designed to withstand demanding POS environments.

**Product Weight/Roll Bar**  
Reduces shrink from overhanging produce.

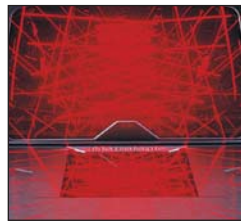
**100 mm (4 in.) Below Counter Depth**  
Thinnest of all high performance, 6-sided bi-optic scanners.

- > **StratosSCAN**  
6-sided, 360° scanning minimizes product orientation
- > **StratosSPHERE Decoding Software**  
Reads poor quality and damaged bar codes
- > **BackPack™**  
Customer interaction peripheral system
- > **Spill Channel**  
Channels spills and debris away reducing maintenance
- > **Flash ROM**  
Upgrade latest software enhancements on-site
- > **Powered Aux Port**  
Connect hand-held scanner for large or bulky items
- > **RSS-14 Decoding**  
Decodes RSS-14, RSS Limited and RSS Expanded emerging symbologies
- > **Integrated Scale**  
Factory integrated or field upgradeable scale
- > **Loud Speaker**  
3 volume/7 tone settings can be heard in all environments
- > **Easy Programming**  
Windows® based utility or simple bar code setup
- > **Fully Automatic**  
"No touch" infrared wake up from power save modes
- > **EAS Deactivation**  
Electronic Article Surveillance (EAS) included

## Easy Installation and Maintenance



- > **StratosSWAP**  
Field replaceable optical scanning modules can be replaced in minutes.



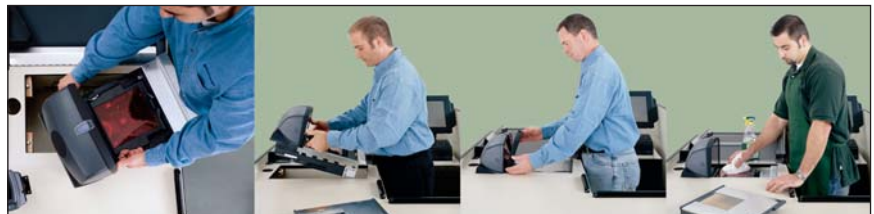
- > **StratosSYNC**  
Independent vertical and horizontal scan zones operate independent from one another.



- > **StratosSCOPE**  
Visual diagnostic indicator provides immediate, easy-to-read feedback on scanner condition.



call:561-582-5510 email:info@cashregisterservices.net



install

replace

maintain

clean